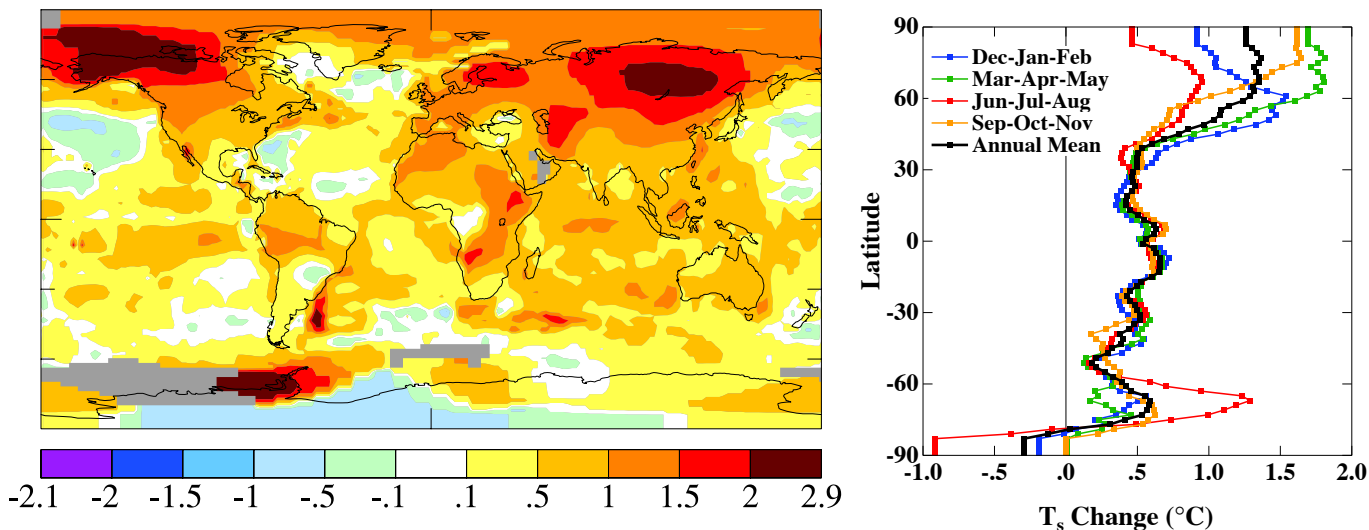
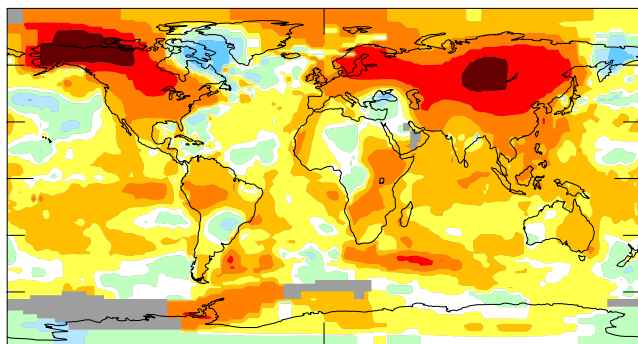


Last 50 Years Surface Temperature Change Based on Linear Trends (°C)

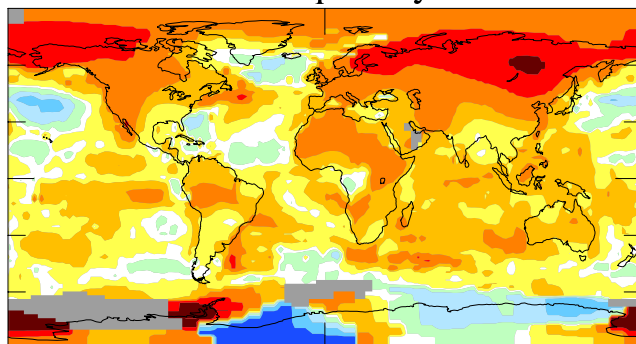
1955->2005 Annual Mean .59



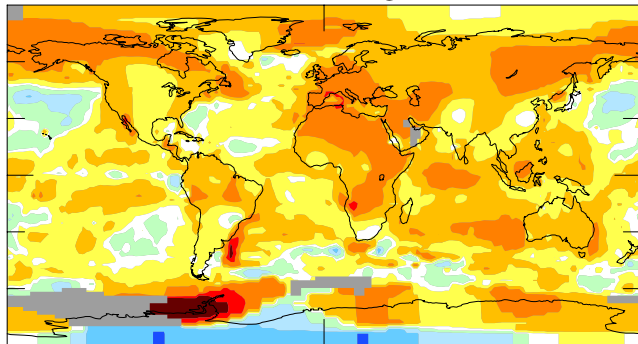
1954/55->2004/05 Dec-Jan-Feb .60



1955->2005 Mar-Apr-May .63



1955->2005 Jun-Jul-Aug .55



1955->2005 Sep-Oct-Nov .56

